

NT PHARMA SCADA

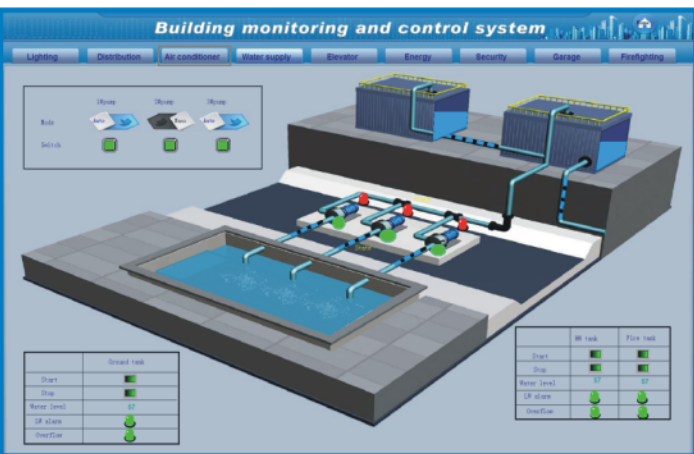
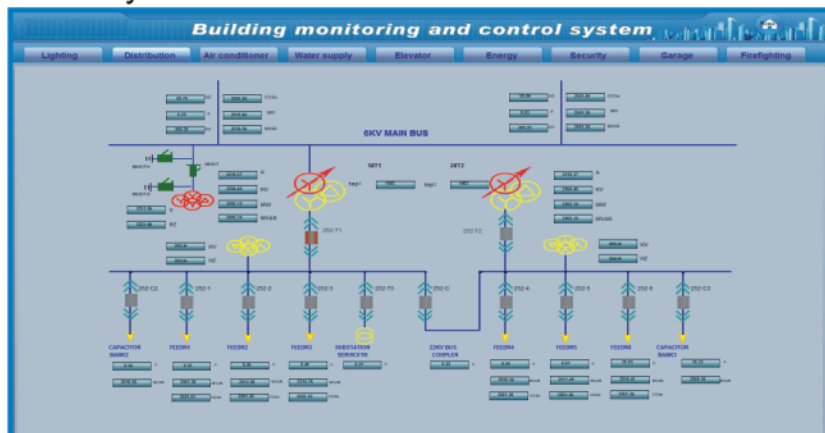
21 CFR compliance with ANNEX EU-11

1. Password protected with unique ID & Password.
2. Password should be minimum 8 character (1Capital, 1 Small , a numeric)
3. System will not accept last 5 consecutive passwords.
4. Limits User login : Fail Attempts (Admin can Unblock only).
5. User Level: Administrator, Manager, Supervisor and Operator.
6. User will be blocked after configured unsuccessfully attempts .
7. Auto Lock feature: If User will Locked in Case then please do not access the system for defined time.
8. User Activity :- Add User, Delete, Block & Unblock and User Settings.
9. Formatted Print Out.
10. Electronics data are stored in built in Secured Data base (PGSQL).
11. Audi trail will Track value change in critical Machine parameter.
12. Data Backup will be exported.
13. Exported Data can be viewed only in SCADA Software.
14. To View Backup, import to Software.
15. Formatted report will have user name and date and Time.
16. Periodically Auto back up :- Export Back up to any connected central server.



KEY FEATURES :-

1. Support multiple communication protocols.
2. Support GPRS,SMS and OPC communication mode (OPC client, OPC Server)
3. A variety of real time and historical trends.
4. Embedded report system, customized real-time and historical report, provide report wizard, configure the Historian and SQL database reports without scripts.
5. Powerful alarm system, support real-time printing, SMS-alarm, email-alarm.
6. Embedded historical database, meet the demands of long-term data storage.
7. In line with FDA 21CFR Part11, GMP electronic signature required & electronic recording function.
8. Support SQL, access to all kinds of database.
9. Support recipe feature & Webviewer.
10. Multiple redundancy functions, support dual machine redundancy, dual device redundancy, dual network redundancy and etc. With high performance, respond within 1 second.



NT PHARMA LICENSES :-

NT PHARMA Software License with upgradable Hardware Key
 (Supports network licenses & time limited licences)
 New license system, more easy to use

Types of Licenses:-

- 32 Tags: Master
- 64 Tags: Master
- 128 Tags: Runtime only
- 256 Tags: Runtime only
- 512 Tags: Runtime or Master
- 1024 Tags: Runtime or Master
- NT PHARMA Unlimited tags Runtime

